



PS AUDIO®

Owner's Reference

Owner's Reference NuWave Phono Converter

Instructions for use



NuWave® Phono Converter™

4826 Sterling Drive, Boulder, CO 80301

PH: 720.406.8946 service@psaudio.com www.psaudio.com

Introduction i

Important Safety Instructions



Read these instructions
Heed all warnings
Follow all instructions



WARNING. TO REDUCE THE RISK OF FIRE OR ELECTRICAL SHOCK, DO NOT EXPOSE THIS APPARATUS TO RAIN OR MOISTURE.

Clean only with a dry cloth.

Do not place flammable material on top of or beneath the component.

All PS Audio components require adequate ventilation at all times during operation. Rack mounting is acceptable where appropriate.

Do not remove or bypass the ground pin on the end of the AC cord unless absolutely necessary to reduce hum from ground loops of connected equipment. This may cause RFI (radio frequency interference) to be induced into your playback setup. All PS products ship with a grounding type plug. If the provided plug does not fit into your outlet, consult an electrician for replacement of the obsolete outlet.

Protect the power cord from being walked on or pinched particularly at plugs, convenience receptacles, and the point where they exit from the apparatus. Unplug this apparatus during lightning storms or when unused for long periods of time.

When making connections to this or any other component, make sure all components are off. Turn off all systems' power before connecting the PS Audio component to any other component. Make sure all cable terminations are of the highest quality.

There are no user serviceable fuses inside this product.

THERE ARE NO USER-SERVICEABLE PARTS INSIDE ANY PS AUDIO PRODUCT. REFER ALL SERVICING TO QUALIFIED SERVICE PERSONNEL

Please contact your authorized dealer, distributor, or PS Audio if you have any questions not addressed in this reference manual.

PS Audio® is a registered trademark of PS Audio Inc., and is restricted for use by PS Audio, Inc., its subsidiaries, and authorized agents.



The exclamation point within a triangle is intended to tell the user that important operating and servicing instructions are in the papers with the appliance.



The lightning flash with arrowhead within a triangle is intended to tell the user that parts inside the product are a risk of electric shock to persons.





Specifications

Owner's Reference NuWave Phono Converter

Unit Weight	14 lbs [6.4 kg]
Unit Dimensions	14" x 8.3" x 2.4" [36cm x 21cm x 6.1cm]
Shipping Weight	20 lbs [9.1 kg]
Shipping Dimensions	22.5" x 13" x 6" [57cm x 33cm x 15cm]
Input Power	Model specific 100VAC, 120VAC, or 230VAC 50 or 60Hz
Power Consumption	15W
Phono Audio Input	
Connector	RCA (X2)
Cartridge type	Moving Coil or Moving Magnet
Cartridge Output (5cm/s)	0.2mV to 220mV
Cartridge load impedance	60Ω(80nF), 100Ω(47nF), 160Ω(33nF), 600Ω(8.0nF), 1.0KΩ(4.7nF), 1.6KΩ(3.3nF), 50KΩ(100pF), 100KΩ(47pF)
Analog Audio Input	
Connector	RCA (X2)
Input level	3.15 V _{RMS} (+10dBV) maximum
Input impedance	47KΩ
Analog Audio Output	
Connector	RCA/XLR Unbalanced /Balanced (X2)
Output level, nominal (@ rated cartridge input)	1.0 V _{RMS} (0dBV)/2.0 V _{RMS} (+6dBV)
Output level, maximum	3.15 V _{RMS} (+10dBV)/6.3 V _{RMS} (+16dBV)
Output Impedance	100Ω/200Ω
Frequency Response	20Hz to 20kHz ± 0.25 dB (RIAA)
THD (5.0) (Balanced, +6dBV, 1KHz)	0.03%
Signal to Noise Ratio (MM-5.0mV)	87dB (Balanced output, referenced to +6dBV nominal output level A-weighted)
Signal to Noise Ratio (MC-0.6mV)	72dB (Balanced output, referenced to +6dBV nominal output level A-weighted)
Equivalent input noise (maximum gain phono)	<200nV
Signal to Noise Ratio (Aux analog input)	107dB (Balanced output, referenced to +6dBV nominal output level A-weighted)



Specifications

Owner's Reference NuWave Phono Converter

A/D Converter	
Format	PCM or DSD
Sample rate (PCM)	44.1kHz, 48.0kHz, 88.2kHz, 96.0kHz, 176.4kHz, 192kHz
Word length (PCM)	16b, 18b, 20b, 24b
Data rate (DSD)	Standard (2.8MHz) or Double (5.6MHz)
S/PDIF Digital Output	
Connector	RCA (Coax)
Impedance	75Ω
Format	PCM or DoP v1.1 (DSD over PCM)
I2S Digital Output	
Connector	HDMI
Format	PCM or DSD
USB Digital Output	
Connector	USB "B" Type
Format	PCM or DoP v1.1 (DSD over PCM)
Transfer mode	Asynchronous



Introduction

Owner's Reference NuWave Phono Converter

Thank you	<p>Thank you for your purchase of the PS Audio® NuWave® Phono Converter (NPC).</p> <p>The NPC is a no-compromise approach to vinyl and analog reproduction in a high end audio system. Recordists and archivists will also enjoy the performance quality of the NPC.</p>
Analog inputs	<p>The NPC accepts inputs from any analog source such as a turntable, tuner, tape recorder, iPod, recording console, DVD audio outs or even the audio outputs of a VCR (does anyone own a VCR anymore?).</p>
Output digital or analog	<p>Once connected you can play vinyl discs, or any analog source, either directly into your preamplifier, through the NPC's analog outputs, or DAC, mixing console, DSP, or digital pro music gear through the NPC's multiple asynchronous digital outputs. You can also connect the NPC to your computer and RIP (record) content in single or double DSD as well as 44.1kHz/16 up to 192kHz/24 PCM through its asynchronous USB output.</p>
DSD and PCM	<p>The NPC produces both DSD and PCM from its digital outputs and high resolution fully balanced analog from its audio outputs. Use the NPC as the vinyl heart of your purely analog setup or digital setup.</p>
Theory of operation	<p>The NPC combines a state-of-the-art Analog to Digital Converter along with an analog phono preamplifier. The two systems built into the NPC can be run independently of each other or in combination.</p> <p>The Analog to Digital Converter (ADC) is based on the Burr Brown PCM4222 Delta Sigma Analog to Digital Converter.</p>
Always converting to DSD	<p>This architecture runs as a core DSD converter, sampling at a constant rate of 352,800Hz (5.6MHz), for any analog input signal. The ADC's digital output can be either DSD (Direct Stream Digital) or PCM (Pulse Code Modulation) chosen through the front panel UI. Because the ADC is fundamentally a multi-bit DSD based ADC, conversion to PCM is handled post digital. This means that the NPC is always running at the highest speed and greatest bit depth, regardless of what the user selects on the front panel as the output.</p>
Pure analog path	<p>The analog phono preamplifier is a passive EQ 3-stage architecture based on a THAT 1532 programmable input stage. The 1532 is a major breakthrough in performance with 60dB of programmable gain and noise specified at an incredibly low 1.9nV/√Hz and wide bandwidth to well over 1mHz. Cartridges can range from several hundred millivolts to just 0.3mv with little increase in noise. Following the passive RIAA EQ stage is a fully discrete, balanced, analog all FET output stage.</p>
Built to the highest standards	<p>The PS NuWave Phono Converters should provide years of trouble free performance for your connected equipment with the peace of mind it will always sound its best.</p> <p>The NPC is proudly designed and Built in Boulder Colorado by hand.</p>



Getting Started

Owner's Reference NuWave Phono Converter

Location	Once your NPC is unpacked, you'll need to find a convenient place to set it. We recommend shelf mounting as close to the analog source (such as a turntable or recording console) if at all possible. Long interconnects between turntables can be problematic with hum. The NPC has a considerable amount of gain in its analog phono stage, so keeping the input cables short is helpful.
Keep the protective cover	If you are in the process of evaluating the NPC, please keep the protective plastic cover on the mirror finish top during the entire evaluation process. Any damage to the top cover will be charged to you if you decide to return the product for credit to PS Audio or your dealer.
Power Cables	<p>Once you have chosen the location for the NPC you can use the supplied AC power cord to connect it to the supported equipment or you can use an aftermarket power cord. We recommend you use a heavy gauge shielded power cable to connect the NuWave Phono Converter to the AC wall receptacle or Power Plant.</p> <p>We strongly recommend the use of a PS Audio PerfectWave® Power AC cable or any good aftermarket power cable for best results as it is always preferable to feed your equipment with the best power cables possible. Choosing any PerfectWave Power cable will make a significant performance improvement over the stock power cable.</p>
Conditioners	The NPC should be fed from a Power Plant® to improve its effectiveness. Use of other power conditioners with the NPC is fine as long as you make sure the unit is performing a beneficial result. We do not recommend assuming a passive power conditioner is going to make the NPC sound its best. Our experience is such that most passive conditioners rob the unit of its rich qualities to the sound, so as the Grail Knight in Indiana Jones says "Choose wisely. While a Power Plant will bring you rich sounds, some conditioners will rob it of its very life".
Country specific AC voltages	<p>The NPC, as with all PS Audio products, is country specific to its incoming AC voltage. This means the units can only be operated at its preset voltages, such as 230 for most of Europe and Asia, 100 volts for Japan and 120 for the US and other similar countries.</p> <p>Immediate damage can occur if you try and power the NPC on a voltage it was not designed to operate on.</p>
Connect two at a time	You can connect a turntable as well as an auxiliary analog input to the NPC at the same time if you wish. Once connected, it is an easy matter to select which of the two inputs you wish to use from the NPC's front panel.



Owner's Guide

Owner's Reference NuWave Phono Converter

-
- Power down first** Our attorney (overly cautious by nature) would recommend that you power down your preamplifier, DAC or even your entire system before connecting the NPC to be super safe. If, however, you are like us, you'll want to simply make sure the preamplifier or DAC is properly muted, as connecting up a new piece of gear can make some ugly noises if you're not careful. Show respect.
- Plug in the NuWave Phono** Plug the NuWave Phono Converter into an AC receptacle with the proper voltage for the unit, preferably using a Power Plant, Dectet or appropriate power conditioner or, at least, a dedicated AC line fed from a PS Audio Power Port AC receptacle. A dedicated line means there is nothing else plugged into the wiring feeding the AC receptacle and that wiring returns directly to the AC breaker box.
- While the NPC can be connected to a two-prong ungrounded outlet, it is recommended that you use a 3-prong (in the US) grounded outlet. Most countries use grounded AC outlets as a matter of course. Yours is most likely a grounded outlet already.
- Use the best power cable you can find** Use the best shielded AC power cable you can to connect a NuWave Phono Converter to its AC source. The better the power cable the less chance for a loss of all the rich musicality the NPC provides.
- Once power is applied to the unit it will be necessary for you to reach around to the back of the unit and turn on the AC power switch. This is the master AC power switch and can be used at any time to power on and off the unit. When powering on or off the unit, please make sure your preamplifier or DAC is muted so you don't get a power down "pop".
- The blue PS logo light** When first powered up the NPC will display a flashing PS logo light on the front panel. This is the Blue PS Audio logo. The logo is not a standby power button, as it is on some PS products, but rather a power indicator on the front panel. Once the logo light stops flashing the front panel display will illuminate.
- The display turns off automatically** The display is designed to turn off, automatically, after approximately 24 seconds. To turn the display back on, simply press any of the 4 front panel buttons.
- We recommend leaving the NPC powered on at all times.
- Break in or burn in time** The unit will require a break in period to sound its best. We typically recommend leaving it powered up for at least several weeks to reach its maximum sound quality. This practice of burn in may seem overly "tweaky" to some but there is no doubt one will hear a change in the overall character of the sound quality over time.
- Getting inside** There are no user serviceable parts inside including a fuse. The top panel is held on with a magnetic passive fastening system and can be simply popped off. Underneath is a subplate that must be removed to access the insides if you insist on looking there. Show respect.

Connect the inputs Connect the inputs of the NPC to the proper source equipment. The phono inputs are specific to a turntable while the auxiliary inputs can be just about any analog source.



Connecting the Phono Input

The phono inputs must be connected only to a turntable setup. Connecting a standard analog source into these inputs is going to sound pretty strange as there is what is known as an RIAA EQ curve built into this phono stage. The RIAA EQ curve is useful only for vinyl record reproduction and will make your records sound right, your flat analog sources sound weird.

Provided your turntable is a normal, high-end unamplified table, plug its RCA outputs directly into the NPC's inputs labeled Phono. Make sure left and right are actually correct, their sections are marked Left and Right.

Attach the ground wire

Most turntables have a ground wire, in addition to the RCA output cables. This ground wire is important because it will help lower the chances for hum. Connect the turntable ground wire to the rear panel ground binding post located in the top right hand corner of the rear of the NPC.

Set the cartridge loading

Once connected it probably makes sense to set the cartridge loading switches at this time since you may forget to do this and have to pull the unit out again. The system is easy to select. With all the switches down, the cartridge loading is quite high at 100K Ohms. To set the load, simply push the appropriate switches to the up position. The switches must be moved in pairs (one for the left and one for the right channel). For Moving Magnet cartridges, the typical load will be 47K. Move switches 1 and 2 up, keeping





Owner's Guide

Owner's Reference NuWave Phono Converter

the other switches (3-10) in the down position. For a moving coil cartridge, the typical load would be 100 Ohms. Move switches 9 and 10 to the up position keeping all the other switches (8-1) in the down position. You can also see some other groupings on the back panel. For example, 60 Ohms can be achieved by placing switches 7,8,9,10 in the up position while all others are down. 600 Ohms can be achieved with switches 3,4,5,6 in the up position while all others down.

Other analog sources

If you are only using the NPC for phono, you can skip this next bit and go directly to connecting its outputs up. If you are also - or only - connecting a flat analog source to the NPC, such as a tape deck, tuner, iPod, VCR analog outputs, etc., then this next part is for you.

If you are planning on using the NPC for analog sources other than a turntable, you will connect the source to the left and right inputs labeled Line In. Line In is a single ended RCA input that can accept the output from just about any analog source such as a tuner or tape deck. The input impedance is a fairly easy load of 47k Ohm which should accommodate a tube, solid state or transformer coupled output with ease. Again, make sure these inputs are connected to the correct channels for proper left and right reproduction. Maximum input voltage is $3v_{rms}$ and the bandwidth extends to 80kHz.

It is fine to have both the Phono Inputs as well as the analog inputs connected at the same time. Selection of the two inputs is chosen from the front panel display.

Analog outputs

There are two analog outputs on the NPC: balanced XLR analog output and unbalanced, RCA analog output. You may connect either or both of these outputs to any preamplifier or analog mixing console you wish. They may be used separately or at the same time if needed. Only the phono input will come through the analog outputs.

Digital Outputs

There are 4 digital connectors on the rear panel of the NPC. From left to right as you face the rear of the unit those connectors are labeled: Firmware, S/PDIF, I²S, USB.

Firmware Upgrades

The firmware connector is used only for firmware updates SHOULD there be any released from us. To use this input you will insert a USB memory stick containing the firmware update, power cycle the unit and it will take care of the rest. With the NPC rear panel power switch in the off position, insert the USB firmware memory upgrade if you are ever instructed to do so (normally you will not need to do this). Once inserted, turn the rear panel power switch to the ON position and refer to the front panel display. Do not remove power until the front panel blue logo light stops flashing or the unit reboots. The new firmware will be installed. Once installed, turn the rear panel power switch to the OFF position, remove the USB memory stick, and return power to the unit.

S/PDIF Output

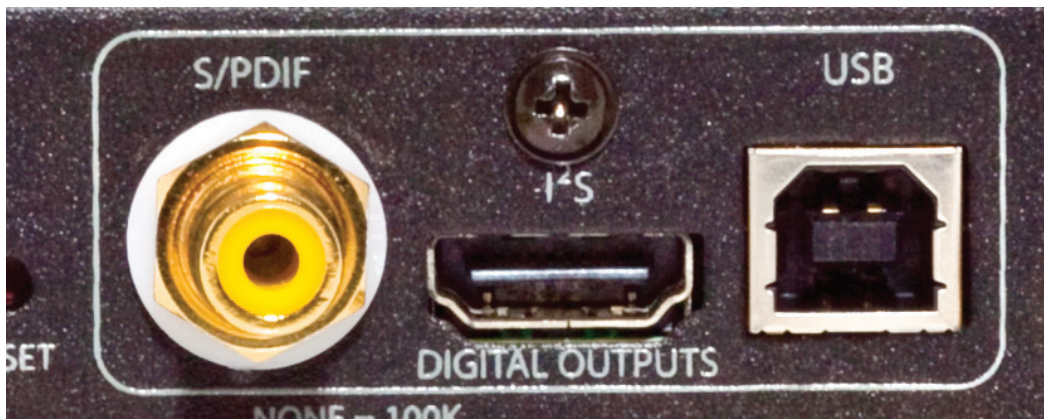
S/PDIF is a digital output that can be used to feed a DAC (Digital to Analog Converter), digital mixing console or computer sound card. This output uses the S/PDIF (Sony Phillips Digital Interface) standard and will send either PCM and DSD to any compatible receiver. PCM can be sent from 44.1kHz/16 bit through 192kHz/24 bit and all standard variations between these two extremes. DSD is sent using the DoP protocol (DSD over PCM) and produces single or double DSD rate. The DoP protocol maintains the original DSD data without corruption to the original source. To do this, it breaks up the DSD stream into smaller individual packets that resemble PCM. Your DSD capable DAC will recombine these packets back together to give you perfect

DSD. If you are using this output be sure and use the highest quality connecting cable appropriate for data transmission.

I²S Output

I²S is a digital output utilizing the HDMI connector on the back of the NPC. The output of this connector is NOT compatible with a standard HDMI connected unit of any kind. There are no HDMI compatible signals here, do not try and plug this into an HDMI input. This output uses the I²S interface protocol standard developed by PS Audio. Multiple manufacturers have adopted this standard in their equipment and the standards are freely given to any audio manufacturer wishing to follow them.

For most of you, the PS Audio PerfectWave series will be the main devices that can take advantage of this output. The I²S output carries full PCM and DSD at all sample rates and bit depths just described in the Coax section. I²S is the native protocol for digital audio used in all DACS, CD players and transports. I²S is the NATIVE format used by these devices and it is this protocol that is COMPRESSED to S/PDIF for transmission over Coax, XLR or Optical outputs on devices.



I²S contains separate clocks and data lines and does not have jitter related issues. Most jitter problems arise from the use of the S/PDIF protocol because compressing the native I²S data and clocks together into one stream and then unravelling this compressed format back to I²S (as is required for it to work) is typically where jitter is introduced. I²S should be the transmission medium of choice if you have a compatible receiver to accept it.

USB Output

The USB output is intended to feed a computer, not the USB input on a DAC or similar device. Do NOT attempt to plug the USB digital output of the NPC into the USB input of your DAC. Frustration and silence will be your only reward for doing so. The USB output of the NPC connects the NPC to your computer. The NPC will look like a peripheral device to your computer. The NPC is a SLAVE and your computer is the MASTER in the same way you might connect up any USB source, printer or peripheral.

The USB output of the NPC will work with both Windows and Mac PC's. Windows will require you

to install a driver, that same driver is built into Mac's running OSX. Once connected to the USB input on your computer, it will be necessary to activate the USB output from the front panel of the NPC. Detailed instructions are included later in this manual.

Reset Function

Between the Firmware input and the Coax digital output is a small hole in the rear panel labeled RESET. Activating this function will reset all settings on the NPC back to factory defaults. The NPC will remember all user settings once selected. If you make some selection and find yourself lost or cannot get back to where you were through the front panel controls, certainly an unlikely situation, you can activate the RESET button at any time. Use a small object such as a ballpoint pen, pencil or toothpick to press the recessed internal button for 2 seconds if necessary.

Front panel Controls

The normal default mode for the front panel display is off. To conserve the longevity of the OLED screen for many years, the NPC will turn its display to off after 24 seconds of display. To reactivate the display, simply press any of the four front panel buttons. Once activated, the display will remain active for approximately 24 seconds.



There are two sets of front panel buttons: MODE up and down and SELECT up and down. The MODE buttons are on the left side of the display screen.

The MODE toggles through the 7 available menu screens.

- Play
- Input
- A/D Mode
- PCM or DSD sample rate
- Gain
- Brightness
- Version

Play Screen

The PLAY screen offers two menu choices: In phase/Out of phase and stereo/mono. The top SELECT button chooses between In Phase and Out of Phase. The bottom SELECT button chooses between Stereo and Mono.

Phase and stereo/mono select choices apply ONLY to the phono stage and not the analog inputs. The choices of phase and stereo/mono will be presented on both the pure analog outputs and the digital outputs of the NPC.

Input Screen

The INPUT screen offers two menu choices: Analog/Phono and Play/Mute. The top SELECT button chooses between the two available inputs, ANALOG and PHONO.

The Analog Input accepts any analog output up to $3v_{rms}$ input level (a direct analog output from a CD player, for example, is typically $2v_{rms}$) at up to 80kHz. The bottom SELECT Button chooses between PLAY and MUTE. PLAY and MUTE functions are active only on the Analog Outputs and do not affect the digital data stream output of the NPC.

A/D Screen

The A/D Mode screen offers two menu choices: PCM/DSD and USB Disabled/Enabled. The top SELECT button chooses between PCM and DSD and the bottom SELECT button chooses whether USB is disabled or enabled.

PCM/DSD Select

Selecting PCM (Pulse Code Modulation which is commonly referred to as Digital Audio and is the standard for CD's) or DSD (Direct Stream Digital which is sometimes referred to as SACD) will determine the digital output stream of the NPC. The three available connections for the digital datastreams are I²S (through a rear panel HDMI connector), COAX (through a rear panel RCA connector) and USB (through a rear panel "B" type USB connector). Whichever format is chosen on the front panel display, PCM or DSD, will always be available at the I²S and COAX outputs. USB will only be active when it is enabled.

USB Select

USB is a type B output, meaning it is a slave device and suitable to connect to a computer only. You may not connect the USB output of the NPC to a USB input on a DAC. Enabling the USB output from the NPC front panel should only be done if you are actually connecting to a computer. Once enabled, the next screen on the NPC display, that selects the sample rate of the chosen audio format, is disabled. To change the sample rate of the NPC when in the USB Enabled mode you must use your connected computer as the User Interface. Please refer to the section specific to USB setup and recording in this manual for further details.

PCM Select

If you have selected PCM as the digital output audio format (and USB is disabled), the next screen available by pressing the UP on MODE is the PCM SR screen. The choices on this screen are FREQ and BITS and these control the SR (Sample Rate) and bit depth.

The upper select button toggles through the available frequencies:

- 44.1kHz
- 48kHz
- 88.2kHz
- 96kHz
- 176.4kHz
- 192kHz



Owner's Guide

Owner's Reference NuWave Phono Converter

Sample rate select affects only the output

Select which of these output sample rates you wish to use. Selecting any of these sample rates does NOT affect the A/D Converter's input sample rate, which is a constant 5.6MHz, (352.8kHz) irrespective of the output sample rate or digital audio format selected.

The NPC's A/D Converter features zero group delay for any PCM sample rate up to 96kHz. The two higher sample rates, 176.4kHz and 192kHz use a more conventional digital filter that does not enjoy the benefits of zero group delay in the PCM mode. DSD does not use similar filtering.

Use 96kHz as your standard output

Our recommended maximum sample rate for all vinyl phono or Analog inputs that do not exceed a usable input bandwidth of 48kHz, is 96kHz. As there is no usable information on a vinyl LP above 30kHz, it will always sound preferable to restrict the maximum output sample rate to 96kHz. If you have an Analog input source that exceeds 48kHz in useful information you wish to preserve, use either 176.4kHz or 192kHz output sample rates. The maximum input bandwidth of the NPC's A/D Converter is 80kHz (it is -3dB at 80kHz) and is always running at 352.8kHz sample rate.

Bit Depth Select

The lower SELECT button chooses the bit depth of the output digital audio stream. Selecting any of the available bit depths, 16, 18, 20 or 24 does not affect the input bit depth which is always at maximum. We recommend to always keep the bit depth selected at 24 bits.

DSD Select

If you have selected DSD as the digital output audio format (and USB is disabled), the next screen available is the DSD screen. Using the upper SELECT button labeled RATE, choose either Standard Rate or Double Rate DSD. Standard Rate is the same as you would find on an SACD (Sony Super Audio Compact Disc) and is the equivalent of 176.4kHz in PCM. If you are recording vinyl LP's it probably doesn't make any sense to use Double Rate DSD as the Standard Rate DSD is more than capable of perfectly preserving all the information possible on an LP.

If you have a live performance you are recording and using the NPC as the A/D Converter, you will have increased performance sound quality using the Double DSD rate, analogous to 352.8kHz sample rate in PCM.

DSD uses DoP

DSD output is sent using the DoP format (Digital over PCM). This format takes the raw, bit perfect DSD stream and chops it up into smaller sized identical packets. Each of the packets is wrapped in a PCM acceptable frame so that to a DAC or computer, the output format is the same as PCM. This then permits PCM based programs, such as Audacity, to record the DSD files as well it permits computers, both Windows and Mac, to manage and accept DSD files despite the fact those files are not natively acceptable for the computer to recognize or manage.

While the DoP standard permits computers to easily handle DSD files without any additional software or configuration, it should be noted that only programs specifically designed for DSD playback will playback the DoP DSD files. Other programs, such as Audacity, cannot playback DSD even though it can record it. Refer to the section on USB and recording for further details and suggestions.

USB Select

If you have USB enabled the control for sample rates will be transferred to the computer connected to the NPC via the USB cable. To enable or disable USB go to the 3rd screen A/D Mode on the NPC front panel. You should only enable USB if you are actually connected to a computer and

intend to use the computer as a recording or playback device.

If you have USB enabled and are connected to a Windows Computer, you will need to install the PS Audio Windows Driver available through this link or through our web site. If you are using a Mac computer it will not be necessary to download and install any drivers as Macs have this driver built in.

In both cases, Windows or Macs, it will be necessary to setup the NPC on the computer.

Setup on Windows

Setting up on a Windows Computer (we show setup on Windows 7.0 here) requires the installation of our USB driver available for free download here: <http://updates.psaudio.com/MarkIIUSBDriver/PSAudio-USBAudio2.0DriverLatest.zip>

Download the driver

Once you have downloaded the driver, **but before you install the driver**, connect the NPC to the computer's USB input and make sure USB is enabled. For help enabling USB, see the section above this titled USB Select.

Connect and power the NPC

With the NPC powered on, connected to the computer through a USB cable not to exceed 5 meters in length, (5 meters is generally accepted as the maximum length for a USB cable but we would recommend something a lot shorter to be safe and yes, the quality of the USB cable matters a lot to the sound quality. Don't cheap out) install the driver on your computer.

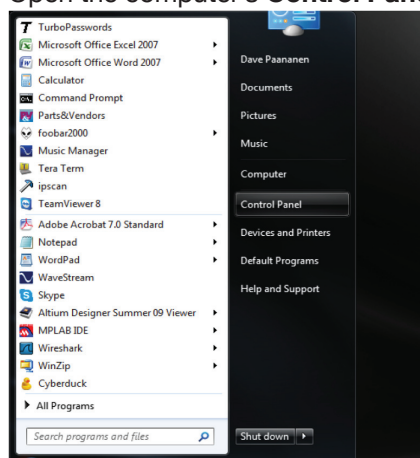
Install the new driver

Properly installed, the driver and NPC are now communicating with other successfully.

It will now be necessary to setup the sample rate and bit depth for the NPC. The computer is now the master, the NPC the slave, and will control the NPC when USB is enabled.

Setup on a Windows PC

Open the computer's **Control Panel**. From the Control Panel open **Hardware and Sound**. From the Hardware and Sound menu open **Sound-> Manage Audio Devices**. From the Manage Audio Devices menu, select the **Recording Tab**. From the Recording tab menu select **Properties**. You should see Line **PS Audio NuWave Phono** as one of the devices. Select the NPC. Then select properties. From the Properties menu select **Advanced**.



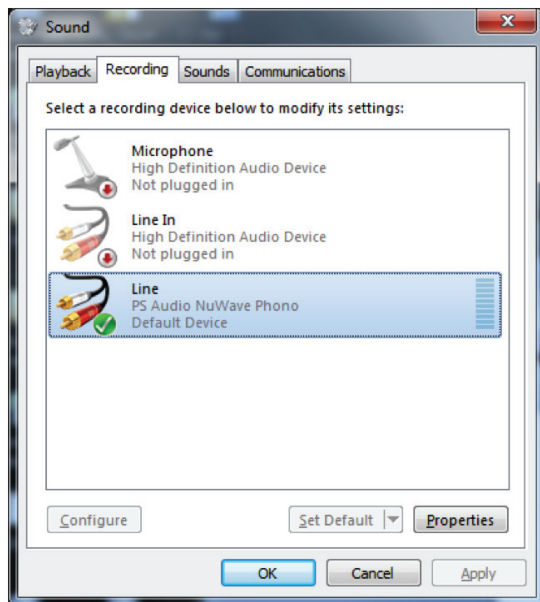
If you have PCM selected

If you have PCM selected on the NPC as the audio format you wish to use, the format select window in the Advanced Properties window drop down menu will display the available sample rates and bit depths to choose from. Using the drop down box as in the picture, select an acceptable sample rate between 44.1kHz and 192kHz.

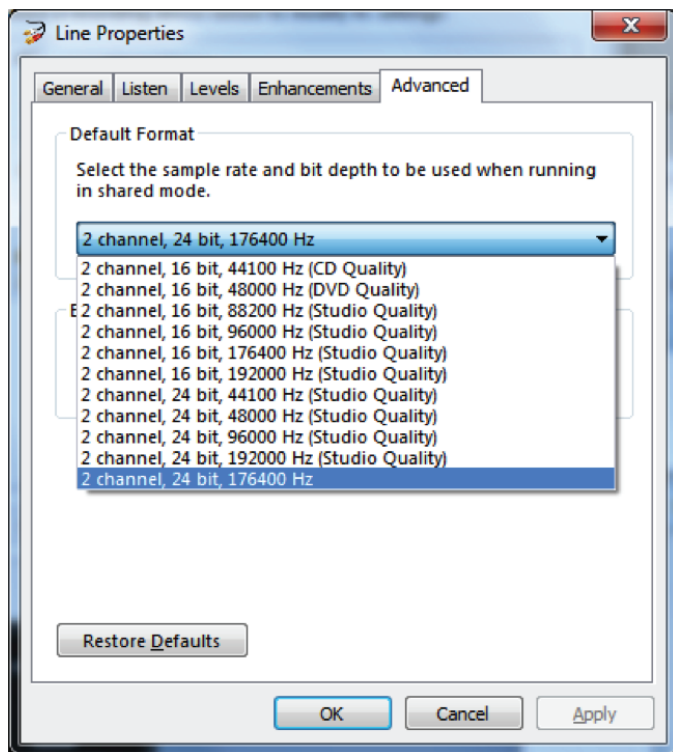
Use 96kHz

We recommend for most users 96kHz and nothing higher. As previously explained, 96kHz provides full bandwidth for any LP or, for that matter, anything most

Select the sample rate



If you select DSD



DoP

Test the connection

people are likely to want to play. Using 96kHz and below engages the best sounding decimation filters in the NPC and provides a near-perfect zero group delay for PCM users. 96kHz gives full bandwidth to 48kHz, exceeding the threshold of human hearing by twice (and vinyl LP's don't exceed 30kHz even under the best circumstances), and maintaining perfect phase relations within the audible band.

Exceeding 96kHz is fine, but unless you have a good reason to do so and need the extended bandwidth of up to 80kHz, not recommended for best sound.

Once selected, the sample rate will appear on the NPC screen.

If you have DSD selected on the NPC as the audio format you wish to use, the format select window in the Windows Advanced Properties screen will display only two available sample rates: 176.4kHz and 352.8kHz. Choosing 176kHz will net Standard DSD rate and choosing 352.8kHz will result in Double Rate DSD being selected. The choice you make will be displayed on the NPC front panel display window.

It is instructive to remember that DSD will be sent using the DoP (Digital over PCM) format which while compatible with any computer or DAC that can accept PCM data, you cannot playback DSD data without installing a program that supports DSD. JRiver and Foobar are two good examples of programs that will playback DSD over DoP.

Once setup it is useful to test the connection and make sure everything is working properly. Use the PCM format mode on the NPC (see above for instructions how to select PCM).

If you do not yet have your turntable connected to the NPC it may be convenient to simply use an iPhone or iPod to feed the Analog Inputs (not the Phono inputs) for this test. Set the output level of the device to maximum, connect a 3.5mm male to dual RCA connecting cable and start playing music on the mobile device. In the Properties menu of the Recording tab you will see a graphic representation of a VU meter next to the NPC and this should show music playing if everything is setup properly. If your computer monitor speakers are on, you should hear the music playing. If you hear no sound it may be necessary to reboot your computer and follow the setup procedure again.

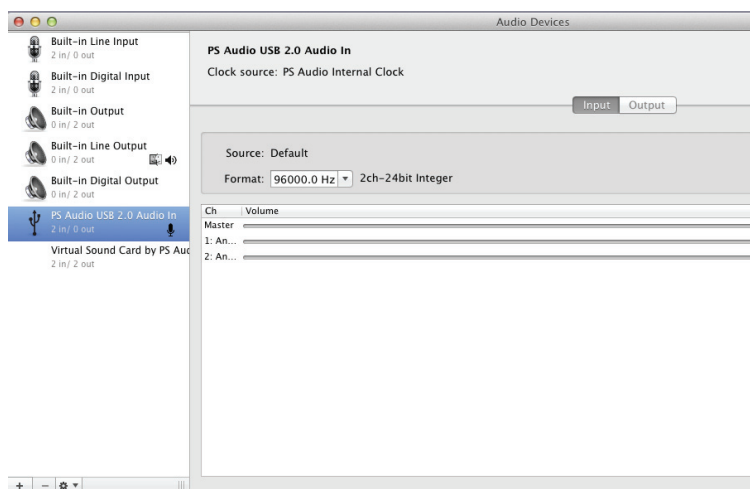
Once you have verified everything is playing properly use any recording program, such as Audacity, as you wish. Instructions on the use of Audacity or other similar recording programs are beyond the scope of this manual. Please refer to the owner's manual of the recording program you're using for further instructions.

Setup on a Mac

To setup on a Mac computer there are no drivers to download and install with OSX. However, we do recommend downloading and installing a free program from Rogue Amoeba called Line In. This small program will help you make sure the NPC is working properly on your Mac. These instructions will assume you have downloaded and installed Line In. Line In is available for free download for Mac OSX here: <http://www.rogueamoeba.com/freebies/>.

Making sure USB is Enabled on the NPC screen A/D Mode, connect a USB cable to the Mac USB input. Keep in mind there is a maximum length for USB cables that should be observed for good communication between devices. 5 meters is generally accepted as the maximum length for a USB cable but we would recommend something a lot shorter to be safe and yes, the quality of the USB cable matters a lot to the sound quality. Don't cheap out.

Launch the Audio Midi Panel



Next, go to Finder->Utilities->Audio Midi Setup and launch it. You should see the NPC displayed as a choice and it will be called PS Audio USB 2,0 Audio In. Select this and, using the secondary mouse option (right click) choose **Use this device for sound input**. If your mouse does not have a right click or secondary option, you can alternatively hold the control key on your keyboard down and click the mouse. This will place a small icon of a microphone next to the NPC. If the NPC does not

show up as a device, make sure it has been enabled as above and the cable is connected. If you still do not see the device, remove the USB cable and plug it in again. That should do the trick and if not, reboot the computer.

Set the sample rate

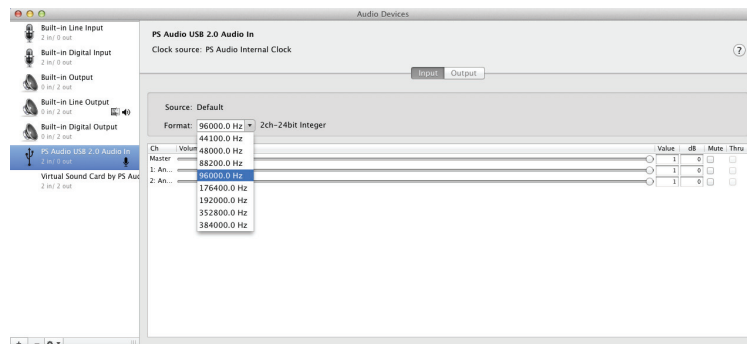
Next you will need to set the sample rate you wish the NPC to operate at. The computer is now the master, the NPC the slave, and will control the NPC when USB is enabled.

Set the correct sample rate!

If you have PCM selected on the NPC as the audio format you wish to use, the format select window in the Audio Midi will display the available sample rates to choose from. On some Mac operating systems, we've noticed that the default sample rate is 352,800kHz the first time the Mac is connected to the NPC. This is wrong and the NPC will not work on your computer if you leave this sample rate selected. Using the drop down box as in the picture, select an acceptable sample rate between 44.1kHz and 192kHz.

Use 96kHz

We recommend for most users 96kHz and nothing higher. As previously explained, 96kHz provides full bandwidth for any LP or, for that matter, anything most people are likely to want to play. Using 96kHz and below engages the best sounding decimation filters in the NPC and provides a near-perfect zero group delay for PCM users. 96kHz gives full bandwidth to 48kHz, exceeding the threshold of human hearing by twice (and vinyl LP's don't exceed 30kHz even under the best circumstances), and maintaining perfect phase relations within the audible band. Exceeding 96kHz is fine, but unless you have a good reason to do so and need the extended bandwidth of up to 80kHz, not recommended for best sound.



Once selected, the sample rate will appear on the NPC screen. 24 bits will be the default bit rate, while in USB enabled mode, regardless of any lower bit depth setting you may have selected.

If you select DSD

display only two available sample rates: 176.4kHz and 352.8kHz. Choosing 176kHz will net Standard DSD rate and choosing 352.8kHz will result in Double Rate DSD being selected. The choice you make will be displayed on the NPC front panel display window.

If you have DSD selected on the NPC as the audio format you wish to use, the format select window in the Audio Midi will

It is instructive to remember that DSD will be sent using the DoP (Digital over PCM) format which, while compatible with any computer or DAC that can accept PCM data, you cannot playback DSD data without installing a program that supports DSD. JRiver and Foobar are two good examples of programs that will playback DSD over DoP.

Test the connection

Once setup it is useful to test the connection and make sure everything is working properly. Use the PCM format mode on the NPC (see above for instructions how to select PCM). Open the program Line In that we encouraged you to download from Rogue Amoeba's website. It's a free program for Mac. Using the top selection window on Line In select the NPC as shown in the picture and your computer's line out or wherever you choose to monitor the sound on your

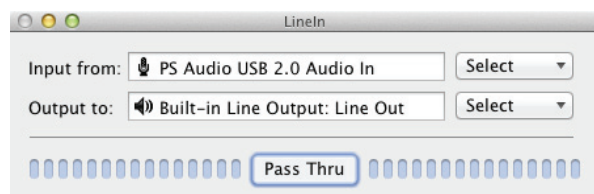
Use Line In

computer. Select the Pass Through button while you are playing music into the NPC. The music should now be audible through your computer monitor loudspeakers.

Use an alternate source

If you do not yet have your turntable connected to the NPC it may be convenient to simply use an iPhone or iPod to feed the Analog Inputs (not the Phono inputs) for this test. Set the output level of the device to maximum, connect a 3.5mm male to dual RCA connecting cable and start playing music on the mobile device. Line In will now play the music on your computer, showing you everything is setup properly. If you hear no sound, make sure the Pass Thru button on Line In has been activated and your settings match those displayed in the screen shot provided in this manual. Should the sound be distorted, or if any problem arises after several minutes of play, it may be necessary to reboot your computer.

Once you have verified everything is playing properly through the Linein program, you will no longer need its services. Simply close Line In and use any recording program, such as Audacity, as you



wish. Instructions on the use of Audacity or other similar recording programs are beyond the scope of this manual. Please refer to the owner's manual of the recording program you're using for further instructions.

The analog phono stage has variable gain settings that you can access from the unit's front panel User Interface.

Cartridge gain setting

The gain of the phono preamplifier can range from 18dB to 78dB selected in 3dB increments. The gains are referenced to the cartridge output at 5cm/s and the balanced outputs of the NPC relative to 0dB.

So, for example, a 220mv moving magnet cartridge, playing a reference track (5cm/s) on a record, will produce 2vrms (+6dB) at the output of the NPC if the gain select is set for a 220mv cartridge.

To adjust the gain of the phono cartridge, use the MODE button to scroll up to the 5th screen labeled GAIN. The possible settings are:

- 18dB (220mv)
- 21dB (160mv)
- 24dB (110mv)
- 27dB (80mv)
- 30dB (56mv)
- 33dB (40mv)
- 36dB (28mv)
- 39dB (20mv)
- 42dB (14mv)
- 45dB (10mv)
- 48dB (7.0mv)
- 51dB (5.0mv)



Owner's Guide

Owner's Reference NuWave Phono Converter

54dB (3.5mv)
57dB (2.5mv)
60dB (1.8mv)
63dB (1.2mv)
66dB (0.9mv)
69dB (0.6mv)
72dB (0.4mv)
75dB (0.3mV)
78dB (0.2mv)

These gain setting may be adjusted on the fly and there's no need to worry about changing them as you listen to a recording. The easiest way to adjust the gain is to start with a number close to what your cartridge rated output is and while playing a record, adjust the gain relative to the volume control on the output DAC or preamplifier you're using.

For example, if you normally listen to a loud passage on an LP at 70% of your preamplifier or DAC's volume control, this would be a good reference to try and match. Set the volume control of your preamplifier or DAC at 70 and play the track you are familiar with. Adjust the NPC cartridge gain up or down to match your memory of the appropriate loudness.

Display screen brightness

The second to the last screen on the NPC User Interface is the Display Brightness screen. There are three levels of display screen brightness you can set the NPC to.

The display will always turn off after 24 seconds regardless of brightness level. This is because the screen is an OLED (Organic Light Emitting Diode) type that has a restricted lifespan if used constantly. To avoid any chance of degradation over the years, auto shutdown of the display helps considerably. As designed, the OLED display screen in your NPC should last for many decades.

- Should the unit be on all the time?** The NuWave Phono Converter is best left plugged in, and on, at all times. The current draw is negligible and keeping it powered on will make sure the internal components sound their best.
- Fuses?** There is no harm in leaving the unit on at all times as the lifespan of the NuWave Phono Converter will be unaffected by leaving it on.
- Placement?** There are no user serviceable fuses or circuit breakers inside the NuWave Phono Converter.
- Break in?** Placement of the NuWave Phono Converter is not critical but some care should be taken to make sure whatever it sits on is reasonably steady and hum free. Any equipment with a large power transformer would be a good source of hum and should be avoided if you're using the phono preamplifier.
- USB doesn't work on my DAC?** The NPC benefits from break in and takes approximately 24 hours to begin to smooth out and sound open. An additional week of use puts the finishing touches on this piece of high end audio equipment.
- USB doesn't work on my DAC?** The USB output on the NPC is not designed to feed a D to A converter (DAC) and is only able to feed a computer. If you have a Mac computer running OSX you should be able to plug the NPC directly into the USB input and the PC will communicate. If you have a Windows based PC you will need a Windows driver to communicate with the NPC. The driver can be downloaded free from the PS Audio website. <http://updates.psaudio.com/MarkIIUSBDriver/PSAudio-USBAudio2.0DriverLatest.zip>
- Why doesn't my computer see the NPC?** If your computer does not see the NPC there is a very good chance you did not enable the USB option on the front panel of the NPC. Go to the NPC user Interface display and make sure USB is enabled. Enable USB only if you need to connect to the computer as enabling this feature disables other features of the NPC.
- Why does the display turn off?** If you see the display going off that is normal. The display on the front panel of the NPC is designed to auto-shutdown every 24 seconds if it is not being used. This helps protect the longevity of the OLED screen.
- Change the gain of the Aux input?** You cannot change the gain for the Aux analog input. The gain of the phono cartridge is set via the front panel display. This gain setting does not affect the analog auxiliary input, which has a fixed 1:1 input gain.
- The blue PS logo isn't a button?** The blue PS logo light is not a power or standby button. It is only an on indicator and pushing it will not do anything.
- Can I change the input sample rate?** The input sample rate of the A/D Converter is always high, sampling at a constant 352.8kHz (5.6MHz) in DSD. This rate cannot be changed. From this digital converted stream we derive the PCM signals by a decimation and reconstruction filter. DSD is native to the NPC.
- What is DoP?** DSD is sent by a protocol known as DoP (DSD over PCM). The DSD signal purity is never sacrificed to do this. DoP works by cutting the DSD stream into packets acceptable to the PCM digital audio
-

How does DoP work?

format. The NPC will then add a PCM acceptable wrapper around the packet of pure DSD data to “fool” the DAC or computer attached to the NPC into believing the data is acceptable PCM. The wrapper is nothing more than a small bit of code known as a header which contains information about the packeted material length, etc.

This is the same sort of method used in another format called TCP/IP, the basis of the internet (invented in 1974 by Vint Cerf and Bob Kahn). Using this packet based system, any type of information can be cut up and sent over any network without molestation or change if it has the correct packet size and wrapper information. In this same way, one can send images, music and data in any form over the home network or the web to anywhere in the world.

What can play the DSD?

Once received, the accepting device will have to be able to remove the wrapper, figure out what the data format is and what to do with it. This is why any PCM based audio program can record DSD if it is sent using the DoP protocols, but only very specific devices capable of playing DSD files can actually playback DSD or DoP.

Both PCM and DSD (over DoP) are available to connect to your DAC, recorder, mixing panel or computer through any of the three available digital outputs. The choice of PCM or DSD is available through the front panel display. You can only output one digital audio format at a time.

What type of PCM filters are in use?

The filters used in the Burr Brown PCM4222 A/D Converter, which is the heart of the NPC digital stream, are linear phase filters in the PCM mode. DSD filters are not related to PCM filtering and decimation. In the PCM mode, downsampling to 44.1kHz through 96kHz/24 bits uses low group delay linear phase filtering and is the best sounding option for PCM on most systems. The two higher downsampled sampled rates, 176.2kHz and 192kHz use the PCM4222's linear phase “conventional decimation filter” which has a slightly higher group delay at the upper frequency extremes.

Why do you recommend only 96kHz/24 bit?

It is recommended that if you are playing to a DAC or recording to a simple recorder such as Audacity, that you use 96kHz/24 bits as standard. Use of higher sample rates should include the careful addition of digital EQ on the top end to compensate for the slight group delay of the conventional linear phase filter. We recommend use of the two higher PCM sample rates only for recording studios and knowledgeable recording and mastering engineers. Use of the two higher sample rates may result in a slightly thinner sound to the midbass areas and a somewhat brighter top end, which can certainly be compensated for through experienced implementation of digital EQ.

Should I be concerned about loss of resolution or detail?

There should be no concern over restricted dynamics, low level detail or presence when listening to or recording LP's or tape at the recommended 96kHz/24 bit settings. Because the NPC is always sampling at an extremely high frequency, the -3dB point for any incoming AC signal is 80kHz and the dynamic range and signal to noise ratio is better than 120dB (which far exceeds the 87dB best case S/N Ratio of the NPC phono stage and LP's of any type). LP's and tape never approach anywhere near these figures and using 96kHz/24 bit resolution gives the user 120dB of dynamic range (107dB in practice) and frequency response extending out to 48kHz without any phase shift.

Certainly feel free to experiment to your heart's content but our recommendation is to stay at 96kHz/24 bits for all the reasons just detailed.



Troubleshooting

Owner's Reference NuWave Phono Converter

NuWave Phono Converter won't turn on

Check to make sure power is going into the NuWave Phono Converter and its rear panel power switch is in the ON position. You can verify AC power available by testing the outlet it is plugged into with another device such as a lamp. Sometimes we find NuWave Phono Converters plugged into switched wall outlets. These are typically the lower of the two AC receptacles and are controlled by a light switch. If you have no power to the receptacle, check the circuit breaker feeding the receptacle. Besides, you should be using a Power Plant to feed the NPC anyway. Shame on you.

Check the logo

If you have verified there is power to feed the NuWave Phono Converter, check the NuWave Phono Converter's blue PS logo to see if it is lit. A lit PS logo indicates there is power, but the display may be blank. That is normal. To activate the display touch any of the 4-buttons on the NPC front panel.

If you have hum

If you are connecting a turntable to the phono inputs on the NPC you need to be very careful so you do not get hum. The NPC has an extraordinary amount of gain available for low output moving coil cartridges and it is possible to pickup radiated hum from power cords, transformers and radio stations if you're not careful. Always make sure you tie the turntable ground wire to the NPC's ground lug binding post. If you hear hum through the speakers, try moving the phono leads between the turntable/arm/cartridge setup to the NPC around. If the hum varies when you move them you need to find the lowest hum point and keep the cables there, get better shielded cables, or remove the source of hum being picked up by the cables.

Hum of this type (induced) is typically a low frequency hum (50Hz or 60Hz) without any buzzing artifacts part of the signal. If your hum is a sharper buzzing noise, it may be from a light dimmer in the room or another piece of equipment nearby. Try turning any dimmer circuit all the way bright (or off) and moving the NPC and the input cables around to best noise levels.

Ground loops

If this doesn't solve the problem this would indicate you probably have a ground loop between equipment and next you should follow these easy humbusting tips.

The easiest way to figure out where ground loop problems lie is by the process of elimination. You need to determine where the hum or buzz is coming from within your system.

If the hum/buzz goes away when you remove the inputs to the power amp, your next step will be to reconnect the amp and move further down the chain. It is important to do this in the correct order and take the time to perform the test in a methodical step-by-step manner.

If you have a preamp, or processor that is feeding the power amp, your next step would be to disconnect all inputs to the preamplifier or processor. Once these are disconnected, and the preamp or processor is connected only to the power amplifier, turn the system on and again, listen for hum. Should the hum now appear, it is a problem with your preamp or processor or their interaction with the power amp. Before returning the preamp or processor to the manufacturer, try a cheater plug to break a ground loop. Cheater plugs are simple devices that convert a three prong AC plug into a two prong AC plug and in the act of converting three prongs, to two prongs, they disconnect the ground from the wall socket. Try one of these on the preamp, or the power amp, or both.

If you determine that there is still no hum present when the preamp, processor or receiver is connected with no inputs, then selectively begin plugging in your various inputs one at a time. After each connection, check for hum until you discover the humming culprit. Use the same method described above to remove the ground on the offending piece of kit.

It may be something unrelated causing the hum

VCR's, surround processors, and any device that is connected to a television cable or satellite dish can cause a loud buzz and should always be suspect. If, by the process of elimination described above, you determine it is a component like a cable TV box that is causing the hum/buzz to occur, and using a cheater plug doesn't help matters, it may be necessary to isolate the cable connection (CATV) with an isolation transformer. This inexpensive device is available at most Wal Mart, Radio Shack or department store type outlets and is sometimes called a 'matching transformer'. If you have problems finding one, call your local cable TV company for advice. The matching transformer will be placed between the cable TV cord and the cable box, TV or processor.

Just remember, take the system down to its simplest level of connection. Find a way to hook the system up with as many pieces of the system missing or not connected. Keep it simple and get it to the point where the hum's gone. Then start adding back components one at a time until the hum returns.

Finding the problem is 9/10th of the work in finding a solution.

Computer does not see the NPC

If your computer does not see the NPC there is a very good chance you did not enable the USB option on the front panel of the NPC. Go to the NPC user Interface display and make sure USB is enabled. Enable USB only if you need to connect to the computer as enabling this feature disables other features of the NPC.

Can't play DSD

You must have a DSD compatible DAC or computer program to play DSD files. Most DACS and computer programs (as of this writing) are not DSD compatible.

How can I tell if I am getting the same quality from the ADC as the pure analog output?

The easiest way to determine how close the digital output of the NPC is to the analog output is to connect both outputs (the NPC analog output and your DAC's analog output) up to your preamplifier and switch between the two and listen. The gains between the DAC output and the pure analog output of the NPC may or may not be matched. Sans any measurement equipment to test the gains, do your best to set the two inputs as close to each other as possible.

If you are running the ADC at the recommended 96kHz/24 bit rate and have a good DAC connected to it, you should be able to compare the analog output of the NPC to the analog output of your DAC, through a preamplifier, and hear little to no difference between the two. Much of this, of course, depends on the quality of your DAC, so if you're hearing a bigger than acceptable difference, you might want to try another DAC to see.

Can't set the sample rate?

When recording a record or a tape recording onto your computer for later transfer to CD, DVD or hard drive, the NPC will deliver a near-perfect digital datastream through its asynchronous USB output at the sample rate you have set on the computer. Remember that if you have the USB output option on

the NPC enabled, you can no longer set or change the sample rate or bit depth on the NPC front panel display. This restriction applies to both PCM and DSD data. The restriction exists because as soon as you enable the USB option on the NPC and connected it to the PC, you have effectively disabled the front panel control of the NPC and given that control to the computer. This is because the NPC is now a slave device and the computer becomes the master device.

Follow the instructions in this manual to set the sample rate and bit depth of PCM (sample rate of DSD) on your PC.

Once you disable the USB option on the NPC display, master control of the A/D Converter returns to the NPC itself. Please see the instructions for setting the sample rates and bit depths in this manual.

The LP recording doesn't show the tracks!

When recording through a typical computer based program like Audacity, the program records everything, including the spaces between the tracks of the record or tape. There is no way for the program to know one track has started or stopped. Unless you have a program that handles this automatically (there are a few but be careful they don't rob you of the low detail surface noise of the record) you must take the time to cut the tracks up into individual files and name them before making your CD, DVD or hard drive based album for later playback.

How do I get cover art?

Most recordings you are likely to make, either in PCM or DSD, will most likely be in the WAV format, the most common of the uncompressed formats. WAV files will not support cover art or fancy naming schemes to look nice. WAV files are pretty crude in their ability to give you anything other than great sounding music.

If it's important to have cover art and good looking titles, you might consider as an alternative AIFF or ALAC (for Mac) or FLAC for Windows. These file types are lossless and support the metadata needed for cover art and good looking titles of tracks and numbering schemes.

What if my turntable sounds bright?

If the turntable setup sounds thin or bright, you may have forgotten to set the cartridge load resistors on the back panel of the NPC. Refer to the section on setting the cartridge loading and remember, the less resistance load you have set on the cartridge, the thinner the system will sound. There is a perfect setting for each cartridge and it is ok to experiment.



Warranty

Owner's Reference NuWave Phono Converter

TERMS AND CONDITIONS

PS Audio warrants the product designated herein to be free of manufacturing defects in material and workmanship, subject to the following conditions, for **a period of 90 days from the date of purchase** by the original purchaser or date of shipment from the authorized PS Audio dealer, whichever comes first. This warranty period can be extended to three (3) years by registering your product. To register, go online www.psaudio.com.

Conditions

This Warranty is subject to the following conditions and limitations: the Warranty is void and inapplicable if the product has been used or handled other than in accordance with the instructions in the owner's manual, abused, or misused, damaged by accident or neglect or in being transported, or the defect is due to the product being repaired or tampered with by anyone other than PS Audio or an authorized PS Audio repair center.

- a. The product must be packaged and returned to PS Audio or an authorized PS Audio repair center by the customer at his or her sole expense in the original packing material. PS Audio will pay return freight of its choice for original purchasers.
- b. Return Authorization Number (RMA Number) is required before any product is returned to our factory for any reason. This number must be visible on the exterior of the shipping container for PS Audio to accept the return. Units shipped to us without a Return Authorization Number or without a visible RMA Number on the exterior of the shipping container will be returned to the sender, freight collect.
- c. RETURNED PRODUCT MUST BE ACCOMPANIED BY A WRITTEN DESCRIPTION OF THE DEFECT.

PS Audio reserves the right to modify the design of any product without obligation to purchasers of previously manufactured products and to change the prices or specifications of any product without notice or obligation to any person.

Remedy

In the event the product fails to meet this Warranty and the above conditions have been met, the purchaser's sole remedy under this Limited Warranty shall be to return the product to PS Audio or an authorized PS Audio repair center where the defect will be repaired, replace or refund through the original point of purchase without charge for parts or labor.

This Warranty is for the benefit of the original purchaser of the covered product if the product has been purchased through an authorized PS Audio dealer, distributor or agent. PS Audio will not honor this warranty without valid proof of purchase from an authorized PS Audio dealer, distributor or agent and or a valid serial number as proof the product is a valid PS Audio product manufactured by PS Audio International.

This warranty does not cover the cost of custom installation, customer instruction, setup adjustments or signal reception problems.

Miscellaneous

This warranty does not cover cosmetic damage or any damage due to accident, misuse, abuse, negligence or modification of, or to any part of the Product, without initial express consent from PS Audio. This warranty does not cover damage due to improper operation or maintenance, connection to improper voltage supply, or attempted repair by anyone other than a facility authorized by PS Audio to service the Product.



Warranty

Owner's Reference NuWave Phono Converter

This warranty is invalid if the factory applied serial number has been altered or removed from the Product.

This warranty is invalid if proof of manufacture by PS Audio International cannot be determined to the satisfaction of the company either by verification of a valid serial number and or a valid receipt that includes the serial number from an authorized PS Audio dealer, distributor or agent.

To locate the servicer or dealer nearest you, or for service assistance or resolution of a service problem, or for product information or operation, call or email PS Audio.

ANY IMPLIED WARRANTIES RELATING TO THE ABOVE PRODUCT SHALL BE LIMITED TO THE DURATION OF THIS WARRANTY. THE WARRANTY DOES NOT EXTEND TO ANY INCIDENTAL OR CONSEQUENTIAL COSTS OR DAMAGES TO THE PURCHASER. Some states do not allow limitations on how long an implied warranty lasts or an exclusion or limitation of incidental or consequential damages, so the above limitations or exclusions may not apply to you. This Warranty gives you specific legal rights, and you may also have other rights that vary from state to state.

Inquiries regarding the above Limited Warranty may be sent to the following address: PS Audio International, Inc., 4826 Sterling Drive, Boulder, Colorado 80301 ATTN: Customer Service; Email: customerservice@psaudio.com; Voice 720-406-8946; FAX: 720-406-8967.

Outside the US

PS Audio has authorized distribution in many countries of the world. In each country, the authorized importing retailer or distributor has accepted the responsibility for warranty of products sold by that retailer or distributor. Warranty service should normally be obtained from the importing retailer or distributor from whom you purchased your product. In the unlikely event of service required beyond the capability of the importer, PS Audio will fulfill the conditions of the warranty. Such product must be returned at the owner's expense to the PS Audio factory, together with a photocopy of the bill of sale for that product, a detailed description of the problem, and any information necessary for return shipment.



If you require service in North America

In the unlikely event there is a problem with your PS Audio component, please contact your dealer, distributor, or PS Audio corporate to discuss the problem before you return the component to our Colorado manufacturing facilities for repair. Products shipped to either the factory or the corporate center may be refused if not accompanied by a PS Audio Service Department issued return authorization number (RMA Number).

Obtain an RA number

It's easy to obtain an RMA number. Simply email or call us in Colorado and we'll be happy to take care of you. Return authorization numbers should be prominently displayed on the outside of the box and an accompanying letter describing the problem and re-listing the RMA number must be inside the box to qualify for service.

Contact information

To contact the PS Audio Service Department:

TELEPHONE	720.406.8946
HOURS M/F	9:00 am to 5:00 pm MST
FAX	720-406-8967
E-MAIL	service@psaudio.com
WEBSITE	http://www.psaudio.com

If you are in the United States or Canada

If you are in the United States or Canada use the following procedure:

1. Obtain a Return Authorization Number (RMA number) and shipping address from the PS Audio Service Department.
2. Insure and accept all liability for loss or damage to the product during shipment to the PS Audio factory and ensure all freight (shipping) charges are prepaid.

The product may also be hand delivered to our Colorado facilities if arrangements with the Service Department have been made in advance. Proof of purchase from an authorized PS Audio dealer, distributor or agent may be required for warranty validation at the time of hand delivery.

Use original packing

Use the original packaging to ensure the safe transit of the product to the factory, dealer, or distributor. PS Audio may, at its discretion, return a product in new packaging and bill the owner for such packaging if the product received by PS Audio was boxed in nonstandard packaging or if the original packaging was so damaged to the point it was unusable. If PS Audio determines that new packaging is required, the owner will be notified before the product is returned.

To purchase additional packaging, please contact your authorized PS Audio dealer, distributor, or the PS Audio Service Department for assistance.

If you are outside the US or Canada

If you are outside the United States or Canada and require service you must contact your country's dealer or distributor for instructions. PS Audio warrants its products (see warranty section) worldwide. Service for PS Audio products outside the United States and Canada is handled through your country's distributor or dealer.



Service

Owner's Reference NuWave Phono Converter

1. Obtain a Return Authorization Number (RMA number) and shipping address from your dealer or distributor's Service Department.
2. Insure and accept all liability for loss or damage to the product during shipment to the dealer or distributor's Service Department and ensure all freight (shipping) charges are prepaid.

If you have problems

If you feel your country's authorized dealer or distributor is either unwilling or unable to service your PS Audio products, please contact our service department at service@psaudio.com or at the above contact numbers to discuss the situation.

Your serial number

Your PS Audio product serial number is:

Please fill in the dealer or distributor's information from where you originally purchased the unit.

Your purchase information

Date of purchase